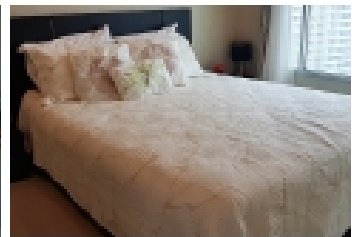
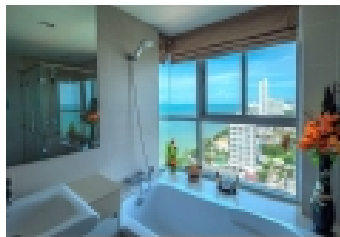
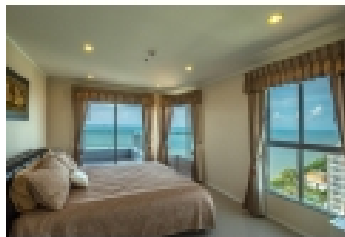
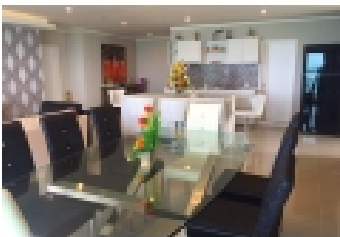
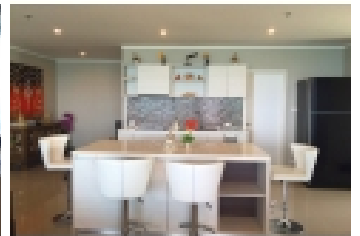
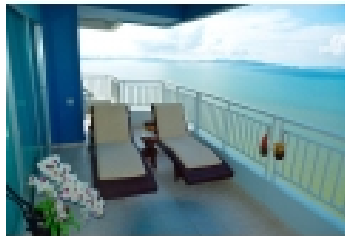
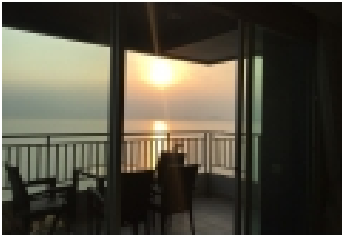


CR1728, JOMTIEN BEACH OCEAN VIEWS 3 BED CONDO, 100,000 THB





**PROPERTY INFORMATION:**

Category	: Condo
Property type	: For rent
Is Feature	: Yes
Number bathrooms	: 3
Number bedrooms	: 3
Parking	: yes secure
Building size (sqmt)	: 153
Number of Floors	: 30

**PROPERTY INFORMATION:**

3 bedroom penthouse, Jomtien beach front condo rent,  
 Jomtien penthouse condominium 3 bedroom penthouse absolute Jomtien beach front condo rent, Lumpini Park Jomtien New 3 bedroom Penthouse condominium for rent front facing balconies located on Jomtien beach with Panoramic ocean views large balcony to enjoy the amazing sunsets with sky lounge above for romantic evenings at home. Truly luxurious beach front condominium for rent That has been used very little so is like new . To arrange a unit and project inspection For more information contact us Beach front facing Penthouse unit for rent with unobstructed Jomtien beach and ocean views, 3 bedrooms 3 bathrooms, Large European kitchen, large lounge area, fully fitted and furnished to very high standards. Located with direct access to Jomtien beach from the front entrance and from the rear of the condominium you have direct access to The new Jomtien second road leading directly into central Pattaya under 10 minutes and a couple of minutes to the main highway Sukhamvit, All the local facilities are easily accessible International schools, international hospitals, Beauty clinics, Shops, restaurants and super markets. Close to everything but far enough away to have peace and quite whilst relaxing at home. Inspection visits of this condominium and the Lumpini Park beach condominium project are highly recommended call Barry Mobile + 66 (0) 899 333 583 Eng or Apple Mobile +66 (0) 806404375 Thai

**LOCAL AMENITIES:**

Super market	: 4 minutes by Car
School	: 5 minutes by Car
Beach	: 2 minutes by Walk
Coffee shop	: 2 minutes by Walk
Airport	: 90 minutes by Car
Bus station	: 4 minutes by Car
Hospital	: 10 minutes by Car
Town center	: 7 minutes by Car
Shopping center	: 4 minutes by Car